

INDUSTRIAL CONVEYOR SOLUTION



CONTENT

Cold Vulcanizing System _____ 2

Hot Vulcanizing System _____ 5

Conveyor Cleaning System _____ 9

Conveyor Buffer System _____ 11

Belt Mechanical Joint System _____ 13

Conveyor Belt Tools _____ 15

COMPANY PROFILE

Zhengzhou Bai-ott New Material Co.,ltd is registered in 2008 as a specific export company of our RAMIMTECH brand.

Our brand is founded from 1997 in zhengzhou city as a professional manufacturer of conveyor belt maintenance materials and a experienced construction team of transportation equipment repair and service.

We always devoted ourselves to provide the most technical professional solutions for various conveyor problems.



Cold Vulcanizing Cement SK313

Cold vulcanizing cement is recommended for conveyor belt splicing and repairing. Non-flammable, used on bonding rubber to rubber, rubber to metal, rubber to fabric, fabric to fabric. For the application of conveyor belt repair, pulley lagging, drum lining, etc.



| Order No. | Product Name | Weight(kg) |
|-----------|-------------------------------|------------|
| 3610101 | Cold vulcanizing cement SK313 | 1 |
| 3610505 | Cold vulcanizing cement SK316 | 1 |
| 3610303 | Cold vulcanizing cement SK318 | 1 |

Metal Primer SK363

Metal primer SK363 is used for pre-treatment of metal surface, which will improve the bonding effect between rubber and metal.



| Order No. | Product Name | Volume(ml) |
|-----------|--------------------|------------|
| 3630101 | Metal primer SK363 | 700 |

Cleaning Solvent SK353

Cleaning solvent SK353 is used for cleaning rubber and metal surface, removing oil and dirt residual from surface, to increase the bonding strength.



| Order No. | Product Name | Weight(kg) |
|-----------|------------------------|------------|
| 3621010 | Cleaning solvent SK353 | 1 |
| 3621010 | Cleaning solvent SK353 | 6 |

Plain Lagging Sheet

Wear resistant, smooth surface, with CN bonding layer on its back side, used for conveyor belt drum lagging.



| Order No. | Product Name | Dimension(mm) |
|-----------|---------------------|---------------|
| 3512110 | Plain Lagging Sheet | 10*2000*10000 |
| 3512112 | Plain Lagging Sheet | 12*2000*10000 |
| 3512115 | Plain Lagging Sheet | 15*2000*10000 |
| 3512120 | Plain Lagging Sheet | 20*2000*10000 |

Further dimensions on demand.

Diamond Lagging Sheet

Diamond lagging sheet is carved with diamond pattern on the surface of rubber sheet, with CN bonding layer on its back side, it is mainly used for conveyor belt drum lagging.

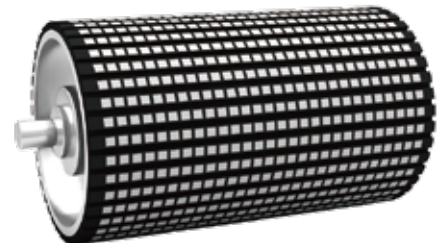


| Order No. | Product Name | Dimension(mm) |
|-----------|-----------------------|---------------|
| 3512110 | Diamond lagging sheet | 10*2000*10000 |
| 3512112 | Diamond lagging sheet | 12*2000*10000 |
| 3512115 | Diamond lagging sheet | 15*2000*10000 |
| 3512120 | Diamond lagging sheet | 20*2000*10000 |

Further dimensions on demand.

Ceramic Lagging Sheet

Ceramic lagging sheet is used for drum lagging in wet and muddy conditions, which has high coefficient of friction, prevent skidding and prolong the service life of conveyor belt drum.



| Order No. | Product Name | Dimension(mm) |
|-----------|-----------------------|---------------|
| 3531250 | Ceramic lagging sheet | 12*500*10000 |
| 3531550 | Ceramic lagging sheet | 15*500*10000 |
| 3532050 | Ceramic lagging sheet | 20*500*10000 |

Repair Strip

Used for repair of conveyor belt longitudinal cuts, with CN bonding layer.

| Order No. | Product Name | Dimension(mm) |
|-----------|--------------------------------|---------------|
| 3111310 | Standard repair strip | 2.2*100*10000 |
| 3111315 | Standard repair strip | 3.2*150*10000 |
| 3111322 | Standard repair strip | 3.2*220*10000 |
| 3111330 | Standard repair strip | 3.4*300*10000 |
| 3111340 | Standard repair strip | 3.4*400*10000 |
| 3111410 | Fabric reinforced repair strip | 3.6*100*10000 |
| 3111415 | Fabric reinforced repair strip | 4.6*150*10000 |
| 3111422 | Fabric reinforced repair strip | 4.6*220*10000 |
| 3111430 | Fabric reinforced repair strip | 4.8*300*10000 |
| 3111440 | Fabric reinforced repair strip | 4.8*400*10000 |



Repair Patch

Used for repair of puncture or gouge damage, with CN bonding layer.

| Order No. | Product Name | Dimension(mm) |
|-----------|--------------------------------|---------------|
| 3111113 | Standard repair patch | 2.4*130*160 |
| 3111120 | Standard repair patch | 2.4*200*260 |
| 3111127 | Standard repair patch | 2.4*270*360 |
| 3111213 | Fabric reinforced repair patch | 3.8*130*160 |
| 3111220 | Fabric reinforced repair patch | 3.8*200*260 |
| 3111327 | Fabric reinforced repair patch | 3.8*270*360 |



Rubber Repair Rebuilder Group

SK358 group including a rebuilder, a primer and a hardener, very easy to operate. It is non-flammable and can dry under room temperature. It is convenient to repair damage on conveyor belt surface, and also very useful to fill in the gap between pulley lagging cover rubber.

| Order No. | Product Name | Weight(g) |
|-----------|----------------|-----------|
| 3623100 | Re-builder gel | 100 |
| 3623150 | Re-builder gel | 150 |
| 3623538 | Re-builder gel | 300 |
| 3623500 | Re-builder gel | 500 |



Uncured Tie Gum (for fabric conveyor belt)

Suitable for conveyor belt hot vulcanization. 10kg/roll.



| Order No. | Product Name | Dimension(mm) |
|-----------|-----------------|---------------|
| 8111888 | Uncured tie gum | 0.8*500 |
| 8111801 | Uncured tie gum | 1*500 |
| 8111802 | Uncured tie gum | 2*500 |
| 8111803 | Uncured tie gum | 3*500 |

Further dimensions on demand.

Uncured Cover Rubber (for fabric conveyor belt)

Suitable for conveyor belt hot vulcanization. 10kg/roll.



| Order No. | Product Name | Dimension(mm) |
|-----------|----------------------|---------------|
| 8111902 | Uncured cover rubber | 2*500 |
| 8111903 | Uncured cover rubber | 3*500 |
| 8111904 | Uncured cover rubber | 4*500 |
| 8111905 | Uncured cover rubber | 5*500 |

Further dimensions on demand.

Hot Vulcanizing Cement SK813

Non-flammable, used for fabric conveyor belt hot vulcanization.

| Order No. | Product Name | Weight(kg) |
|-----------|------------------------------|------------|
| 8111805 | Hot vulcanizing cement SK813 | 1 |



Uncured Tie Gum (for steel cord conveyor belt)

Suitable for conveyor belt hot vulcanization. 10kg/roll.

| Order No. | Product Name | Dimension(mm) |
|-----------|-----------------|---------------|
| 8111812 | Uncured tie gum | 2*500 |
| 8111813 | Uncured tie gum | 3*500 |
| 8111814 | Uncured tie gum | 4*500 |
| 8111815 | Uncured tie gum | 5*500 |



Uncured Cover Rubber (for steel cord conveyor belt)

Suitable for conveyor belt hot vulcanization. 10kg/roll.

| Order No. | Product Name | Dimension(mm) |
|-----------|----------------------|---------------|
| 8111912 | Uncured cover rubber | 2*500 |
| 8111913 | Uncured cover rubber | 3*500 |
| 8111914 | Uncured cover rubber | 4*500 |
| 8111915 | Uncured cover rubber | 5*500 |
| 8111916 | Uncured cover rubber | 6*500 |



Hot Vulcanizing Cement SK823

Used for steel cord conveyor belt vulcanization.

| Order No. | Product Name | Weight (kg) |
|-----------|------------------------------|-------------|
| 8111807 | Hot vulcanizing cement SK823 | 1 |



PVC/PVG Uncured Cover Rubber

Suitable for conveyor belt hot vulcanization. 10kg/roll.



| Order No. | Product Name | Dimension(mm) |
|-----------|------------------------|---------------|
| 8111822 | PVC/PVG uncured rubber | 2*500 |
| 8111824 | PVC/PVG uncured rubber | 4*500 |

Hot Vulcanizing Cement SK833

Used for PVC/PVG conveyor belt hot vulcanization.



| Order No. | Product Name | Weight(kg) |
|-----------|------------------------------|------------|
| 8111825 | Hot vulcanizing cement SK833 | 1 |

Quick Repair Rubber

Quick rubber repair resin is a kind of high wear resistant and high elastic PU materials, which can dry quickly in 1 or 2 hours. It is a good choice to repair the large conveyor belt damage such as holes or peel surfaces.



| Order No. | Product Name | Weight (g) |
|-----------|---------------------|------------|
| 8111835 | Quick repair rubber | 100 |
| 8111836 | Quick repair rubber | 150 |
| 8111837 | Quick repair rubber | 300 |
| 8111838 | Quick repair rubber | 500 |

Vulcanizing Press

Vulcanizing press is used for conveyor belt hot splicing, it can be used on fabric, steel cord, PVC/PVG conveyor belt hot vulcanization.

Technical Data

| | |
|------------------------|-------------------------|
| Pressure: | 1.5MPa (200PSI) |
| Temperature: | 145℃ |
| Surface Temperature: | ±3℃ |
| Heating Up Time: | < 30min |
| Voltage: | 220V/380V/440V/660V,etc |
| Control Cabinet Power: | 9.8~36 KW |
| Temp Range: | 0~200℃ |
| Time Adjustable Range: | 0~99min |



| Order No. | Belt Width(mm) | Size(mm) | Heating Plate(mm) | Power(kw) |
|-----------|----------------|-----------|-------------------|-----------|
| RAM-650 | 650 | 650*830 | 830*820 | 9.8 |
| | | 650*1000 | 1000*820 | 11.8 |
| RAM-800 | 800 | 800*830 | 830*995 | 11.97 |
| | | 800*1000 | 1000*995 | 14.4 |
| RAM-1000 | 1000 | 1000*830 | 830*1228 | 14.7 |
| | | 1000*1000 | 1000*1228 | 17.8 |
| RAM-1200 | 1200 | 1200*830 | 830*1431 | 17.2 |
| | | 1200*1000 | 1000*1431 | 20.7 |
| RAM-1400 | 1400 | 1400*830 | 830*1653 | 19.8 |
| | | 1400*1000 | 1000*1653 | 23.8 |
| RAM-1600 | 1600 | 1600*830 | 830*1867 | 22.3 |
| | | 1600*1000 | 1000*1867 | 27 |
| RAM-1800 | 1800 | 1800*830 | 830*2079 | 24.9 |
| | | 1800*1000 | 1000*2079 | 30 |
| RAM-2000 | 2000 | 1800*1000 | 830*2303 | 27.6 |
| | | 2000*1000 | 1000*2303 | 33.2 |
| RAM-2200 | 2200 | 2200*830 | 830*2478 | 29.7 |
| | | 2200*1000 | 1000*2478 | 35.8 |

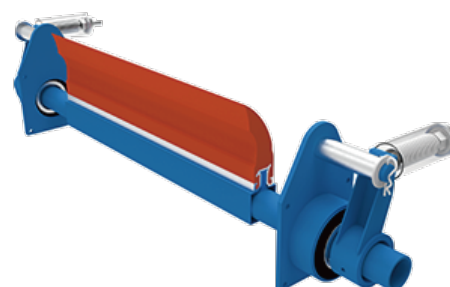
Further dimensions on demand.

Including parts

Aluminum beam, Temperature control cabinet, Heat plate, Thermal baffle, Clamping nut screw, Spanner, Water press plate, Clamping bolts, Nuts, Gaskets, Auxiliary cable plug, Heavy duty hose, Electric pump, Hand manual pump.

Primary Belt Cleaner(spring or twist tensioner)

Primary belt cleaner is installed under the center line of head drum. Made by polyurethane, which has superior features of anti-abrasion, anti-corrosion, anti-fracture, protect the belt from damage and prolong service life of belt.

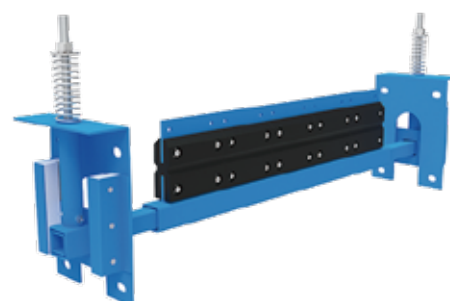


| Order No. | Product Name | Belt Width(mm) |
|-----------|----------------------|----------------|
| 7855165 | Primary belt cleaner | 650 |
| 7855180 | Primary belt cleaner | 800 |
| 7855110 | Primary belt cleaner | 1000 |
| 7855112 | Primary belt cleaner | 1200 |
| 7855114 | Primary belt cleaner | 1400 |
| 7855116 | Primary belt cleaner | 1600 |
| 7855118 | Primary belt cleaner | 1800 |
| 7855120 | Primary belt cleaner | 2000 |
| 7855122 | Primary belt cleaner | 2200 |

Further dimensions on demand.

Secondary Tungsten Belt Cleaner

Secondary tungsten belt cleaner is installed on the return side of conveyor belt, used together with the primary belt cleaner, which has a self adjusting spring tensioner system to maintain close contact with the belt without damaging the belt and achieve superior cleaning effect.



| Order No. | Product Name | Belt Width(mm) |
|-----------|------------------------|----------------|
| 7855565 | Secondary belt cleaner | 650 |
| 7855580 | Secondary belt cleaner | 800 |
| 7855510 | Secondary belt cleaner | 1000 |
| 7855512 | Secondary belt cleaner | 1200 |
| 7855514 | Secondary belt cleaner | 1400 |
| 7855516 | Secondary belt cleaner | 1600 |
| 7855518 | Secondary belt cleaner | 1800 |
| 7855520 | Secondary belt cleaner | 2000 |
| 7855522 | Secondary belt cleaner | 2200 |

Further dimensions on demand.

Dry Wipe Belt Cleaner

Dry wipe belt cleaner is designed to be the third strengthen part in conveyor belt cleaning system. Made by polyurethane and closely contact with belt surface to help remove the residue water or tiny materials for improving the productivity.

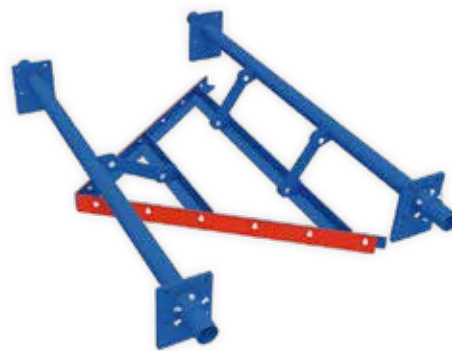


| Order No. | Product Name | Belt Width(mm) |
|-----------|-----------------------|----------------|
| 7855765 | Dry wipe belt cleaner | 650 |
| 7855780 | Dry wipe belt cleaner | 800 |
| 7855710 | Dry wipe belt cleaner | 1000 |
| 7855712 | Dry wipe belt cleaner | 1200 |
| 7855714 | Dry wipe belt cleaner | 1400 |
| 7855716 | Dry wipe belt cleaner | 1600 |
| 7855718 | Dry wipe belt cleaner | 1800 |
| 7855720 | Dry wipe belt cleaner | 2000 |
| 7855722 | Dry wipe belt cleaner | 2200 |

Further dimensions on demand.

V Plough Belt Cleaner

V Plough belt cleaner is installed in front of the returing roller on belt non-working surface. Aim at cleaning the residual materials that sandwiched between the drum and the conveyor belt.

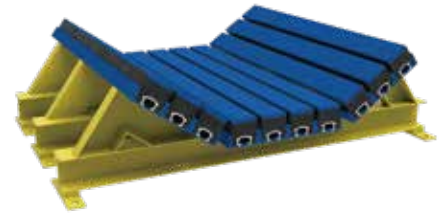


| Order No. | Product Name | Belt Width(mm) |
|-----------|-----------------------|----------------|
| 7855965 | V plough belt cleaner | 650 |
| 7855980 | V plough belt cleaner | 800 |
| 7855910 | V plough belt cleaner | 1000 |
| 7855912 | V plough belt cleaner | 1200 |
| 7855914 | V plough belt cleaner | 1400 |
| 7855916 | V plough belt cleaner | 1600 |
| 7855918 | V plough belt cleaner | 1800 |
| 7855920 | V plough belt cleaner | 2000 |
| 7855955 | V plough belt cleaner | 2200 |
| 7855924 | V plough belt cleaner | 2400 |

Further dimensions on demand.

Impact Bed

Impact bed is installed under the conveyor belt loading points, thus, impact bars consist of three different parts, wear resistant and low friction UHMW-PE sheet, high-elasticity rubber, aluminium T-bolt fastening system. Apart from this combination, all - PU type also popular under easy wear working situation.



| Belt Width | Impact Bar Setting | | | | | Conveyor Roller Width |
|------------|--------------------|--------|-------|-------------|--------|-----------------------|
| | Impact Bar Number | | | Bar Spacing | | |
| | Left | Middle | Right | Sides | Middle | |
| 550 | 1 | 2 | 1 | 50 | 0 | 200 |
| 650 | 2 | 2 | 2 | 25 | 25 | 250 |
| 800 | 2 | 3 | 2 | 50 | 5 | 315 |
| 1000 | 3 | 3 | 3 | 25 | 25 | 380 |
| 1200 | 3 | 4 | 3 | 55 | 20 | 465 |
| 1400 | 4 | 5 | 4 | 45 | 7 | 530 |
| 1600 | 5 | 5 | 5 | 25 | 25 | 600 |
| 1800 | 5 | 6 | 5 | 10 | 10 | 670 |

Further dimensions on demand.

Impact Bar

| Order No | Length (mm) | Width (mm) | Thickness (mm) | UHMWPE Layer (mm) |
|-------------|-------------|------------|-----------------|-------------------|
| RIT-IB-600 | 600 | 100 | 50 75 100 | 12.5 |
| RIT-IB-700 | 700 | | | |
| RIT-IB-750 | 750 | | | |
| RIT-IB-800 | 800 | | | |
| RIT-IB-900 | 900 | | | |
| RIT-IB-1000 | 1000 | | | |
| RIT-IB-1220 | 1220 | | | |
| RIT-IB-1400 | 1400 | | | |



Further dimensions on demand.

Skirt Rubber

Skirt rubber is designed according to transport materials and structure of conveyor chute. It can fundamentally solved the problems such as material spraying, air leakage and dust raising on two sides of guide chutes. We usually produce all rubber, rubber plus PU and all PU material. Shapes including Y, I, F, Sandwich shape to meet different working environment.

| Order No. | Product Name | Dimension(mm) |
|-----------|--------------|-----------------------|
| 3521100 | Skirt rubber | 10/15/20/25*100*10000 |
| 3521150 | Skirt rubber | 10/15/20/25*150*10000 |
| 3521200 | Skirt rubber | 10/15/20/25*200*10000 |
| 3521250 | Skirt rubber | 10/15/20/25*250*10000 |
| 3521300 | Skirt rubber | 10/15/20/25*300*10000 |



Further dimensions on demand.

Nature Rubber Skirting

The nature rubber skirting with high elasticity, soft and wear abrasive advantages, very good at making rubber skirting. When stop the material spread out, it can also protect the conveyor belt well. The specification, size and color both can be customized.

| Color | OEM | |
|------------------------|-------------------|---|
| Polymer | DIN ISO 1629 | NR |
| Hardness | DIN ISO | 51Shore A |
| Abrasion | DIN ISO | 160 mm ³ |
| Specific Weight | DIN EN ISO 1183-1 | 1.11g/cm ³ (69.30 lb/ft ³) |
| Tensile strength | DIN 53 504 | 25N/mm ² |
| Elongation At Break | DIN 53 504 | 600% |
| Resilience Elasticity | DIN 53 512 | 70% |
| Tear Growth Resistance | ISO 34-1 Method A | 11N/mm |



Further dimensions on demand.

Belt Fastener

Belt fastener is a mechanical belt joint and rapidly connect the break part of the conveyor belt or two joints. It is made by galvanized steel so with good anti-corrosion and strength. It can be easily operated by the matched wrench tools. Just one person can finish installment so very convenient.

| Order No. | Product Name | Belt Thickness(mm) |
|------------|----------------------|--------------------|
| RIT-BF-140 | Belt fastener 140# | 5-11 |
| RIT-BF-190 | Belt fastener 190# | 8-14 |
| RIT-BF-112 | Belt fastener 1.1/2" | 11-17 |
| RIT-BF-002 | Belt fastener 2" | 14-21 |
| RIT-BF-212 | Belt fastener 2.1/2" | 19-25 |
| RIT-BF-003 | Belt fastener 3" | 20-25 |



Belt Fastener Wrench Tool Kits

4 tools can be used to drill hole, install screw and break the beyond longer bolts. They are a group with different size for the exact fastener size.

| Order No. | Fastener Model(mm) |
|-------------|----------------------|
| RIT-BFT-140 | Belt fastener 140# |
| RIT-BFT-190 | Belt fastener 190# |
| RIT-BFT-112 | Belt fastener 1.1/2" |
| RIT-BFT-002 | Belt fastener 2" |
| RIT-BFT-212 | Belt fastener 2.1/2" |
| RIT-BFT-003 | Belt fastener 3" |



Mechanical Joint

Mechanical joint made by rubber, EPDM and accessories. Just use a screw driver can install it. All bolts will be even with the belt surface and matched well with the belt. Running very fluently and can withstand different temperature. Stainless steel type can prevent de-ironing separator.

| Order No. | Product Name | Dimension(mm) |
|------------|---|---------------|
| RIT-MJ-200 | Light seamless mechanical joint | 11*200*10000 |
| RIT-MJ-254 | Standart seamless mechanical joint | 15*254*10000 |
| RIT-MJ-350 | High strength seamless mechanical joint | 19*350*10000 |
| RIT-MJ-120 | Split seamless mechanical joint | 11*120*10000 |



Rivet Lacing

Rivet lacing system consist by two sides of lacing, one pin and matched rivet. It like a zipper can well and tightly connect two joints of the belt. And it is also convenient so that can be finished by one person with the installed machine. Belt can be smooth after use it and running well.



| Order No. | Product Name | Fastener Model(mm) |
|-----------|---------------------|--------------------|
| RIT-RL-10 | Rivet lacing R2 | 5-10 |
| RIT-RL-15 | Rivet lacing R5 | 6-12 |
| RIT-RL-15 | Rivet lacing R5-1/2 | 10-15 |
| RIT-RL-18 | Rivet lacing R6 | 14-18 |

Length as belt size.

Rivet Lacing Joint Installment Machine.

Rivet lacing joint installment machine. Used to install the bolts on the belt rivet lacing system. Suitable for any size of rivet lacing size. Width can be made as your belt width.



| Order No. | Product Name | Belt Width(mm) |
|-------------|-------------------|----------------|
| RIT-RL-800 | Installment tools | 800 |
| RIT-RL-1000 | Installment tools | 1000 |
| RIT-RL-1200 | Installment tools | 1200 |
| RIT-RL-1400 | Installment tools | 1400 |
| RIT-RL-1600 | Installment tools | 1600 |
| RIT-RL-1800 | Installment tools | 1800 |

Belt Laminating Machine

Made by steel, can be used to laminating the conveyor belt to suitable thickness so that can install the belt fastener or joint. Use it to change the belt thickness so after install the joint, the belt still even with the whole surface.



#T010350



Tire Regroover

#T350101



Regroover Blade

#5111201



Angle Grinder

#5111202



Rubber Stripper

#R020200



Vice Grip

#R070027



Porcupine Roller

#R060004



Flat Roller

#R130155



Hawk Ply Knife

#R120300



Ply Lifter

#T030710



Iron Brander

#T031530



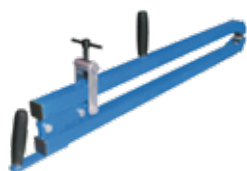
Iron Brander

#5113104



Extruder Gun

#R011200



Double Acting Roller

#R090030



Ply Knife Spare Blade

#R090158



Adjustable Ply Knife

#R110317



Offset Knife

#R160145



Rubber Knife

#R140200



Don Carlos Knife

#R140170



Don Carlos Spare Blade

#R150170



Multi-Functioning Knife

#R190040



Glue Brush

#R080340



Hand Rasp

#R080098



Hand Rasp Spare Blade

#R170340



Rubber Hammer

#R042001



F Clamp

#B110018



Tungsten Buffing Disc

#5123103



Moon Knife

#R100158



Ply Knife

#R030620



Pincer

#B910525



Steel Brush Roller

#5124103



Sharpening Stone

#R210158



Lnk Box



**Room E903, Jianye Five Building, Shangdu Road,
New Eastern District, Zhengzhou, China. 450008**

TEL: +86-371-66346399

Fax: +86-371-66346399

Website: www.ssdzj.com
